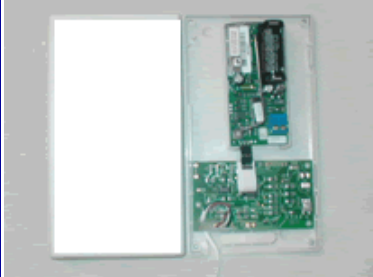


# Gas Allocation System

Time and Temperature

*Baseboard Heating Systems & Fan-coil*



The WaterWatch gas allocation system is designed to accurately allocate gas consumption of hydronic baseboard and fan-coil systems. The energy monitor measures both run-time and temperature and converts the data into a wireless pulse output for data storage and retrieval by WaterWatch. The non proprietary system is efficient and reliable.

The energy monitor considerably reduces resident gas consumption and allows for the recovery of gas costs. Studies show that submetering of utilities can reduce consumption by 20% or more. Once residents are held accountable for their portion of the utility, they will conserve.

## Hydronic Baseboard

The energy monitor measures the 24VAC zone valve and water temperature. The monitor indicates the length of “on time” and temperature that was delivered to each apartment. A formula of time and temperature, linear foot of baseboard, and the BTU factor of the heating system are calculated to provide heat output readings as relative BTUH.

## Fan-Coil/Chiller

The energy monitor measures fan time and water temperature. It uses the 24VAC fan-coil output or transformer for “on time”. The energy monitor measures both run-time and temperature and converts the data into a wireless pulse output for data storage and retrieval by WaterWatch.

## Why WaterWatch?

- 1) Daily tamper circuitry detects and transmits tamper codes for such issues as: disconnected zone valve, cut wire to zone valve or temperature sensor, removed sensor, zone valve jammed open or closed.
- 2) Data collection via an industry standard non proprietary Inovonics wireless network
- 3) Customer service is approached with respect, reliability, and honesty.
- 4) A proven submetering company since 1997.

## WATERWATCH CORPORATION

67 Warehouse Street  
Rochester, New York 14608

585-454-1360  
800-256-9826  
585-454-4056 fax  
sales@waterwatchcorp.com